



07 CR 41

Central Units AC31 series 40

Description: see "Overview Central Units". Centrally expandable with up to 6 I/O modules. CRxx: relay outputs, CTxx: transistor outputs. Program memory without / with online changes: 34 [kB] / 16 [kB].

Type	I/O (DI / DO / AI) integrated	Counter inputs/ impulse outputs integrated	Supply voltage	Connection type	Order Number	Weight 1 piece kg
07 CR 41	8 / 6 / -	2 / -	24 V DC	screw terminal	1SBP 26 0020 R1001	0.400
				spring-type terminal	1SBP 26 0520 R1001	0.400
			120/230 AC	screw terminal	1SBP 26 0021 R1001	0.800
				spring-type terminal	1SBP 26 0521 R1001	0.800
07 CT 41	8 / 6 / -	2 / 1	24 V DC	screw terminal	1SBP 26 0022 R1001	0.400
				spring-type terminal	1SBP 26 0522 R1001	0.400
07 CR 42	8 / 6 / 3	2 / -	24 V DC	screw terminal	1SBP 26 0023 R1001	0.400
			120/230 AC	screw terminal	1SBP 26 0024 R1001	0.800
07 CT 42	8 / 6 / 3	2 / 1	24 V DC	screw terminal	1SBP 26 0025 R1001	0.400

Central units AC31 series 50

Description: see "Overview Central Units". Integrated CS31 field bus. Centrally expandable with up to 6 I/O modules, decentrally up to 31 I/O modules. KRxx: relay outputs, KTxx: transistor outputs. Program memory without / with online changes: 34 [kB] / 16 [kB].

Type	I/O (DI / DO / AI) integrated	Counter inputs/ impulse outputs integrated	Supply voltage	Connection type	Order Number	Weight 1 piece kg
07 KR 51	8 / 6 / -	2 / -	24 V DC	screw terminal	1SBP 26 0010 R1001	0.400
				spring-type terminal	1SBP 26 0510 R1001	0.400
			120/230 AC	screw terminal	1SBP 26 0011 R1001	0.800
				spring-type terminal	1SBP 26 0511 R1001	0.800
07 KT 51	8 / 6 / -	2 / 1	24 V DC	screw terminal	1SBP 26 0012 R1001	0.400
				spring-type terminal	1SBP 26 0512 R1001	0.400



07 KR 51

Bus modules series 40..50

Description: see "Overview I/O modules". Integrated CS31 field bus. Centrally expandable with up to 6 I/O modules (Max. 8 AI / Max. 4 AO).

Type	Number DI / DO	Relay/ transistor-outputs	Supply voltage	Connection type	Order Number	Weight 1 piece kg
ICMK 14 F1	8 / 6	Relay	24 V DC	screw terminal	1SBP 26 0050 R1001	0.400
				spring-type terminal	1SBP 26 0550 R1001	0.400
ICMK 14 F1	8 / 6	Relay	120/230 AC	screw terminal	1SBP 26 0051 R1001	0.800
				spring-type terminal	1SBP 26 0551 R1001	0.800
ICMK14 N1	8 / 6	Transistor	24 V DC	screw terminal	1SBP 26 0052 R1001	0.400
				spring-type terminal	1SBP 26 0552 R1001	0.400

Bus modules series 40..50

Description: see "Overview I/O modules". MODBUS RTU slave integrated. Automatic baudrate adaption. Centrally expandable with up to 6 I/O modules, either digital or analogue.

Type	Number DI / DO	Relay/ transistor-outputs	Supply voltage	Connection type	Order Number	Weight 1 piece kg
ICMK 14 F1-M	8 / 6	Relay	24 V DC	screw terminal	1SBP 26 0053 R1001	0.400
ICMK 14 F1-M	8 / 6	Relay	120/230 AC	screw terminal	1SBP 26 0054 R1001	0.800
ICMK14 N1-M	8 / 6	Transistor	24 V DC	screw terminal	1SBP 26 0055 R1001	0.400



ICMK 14 F1



XI 16 E1

Digital I/O modules series 40..50

Description: see "Overview I/O modules".

Type	Number of DI / DO / DC	Input signal	Output signal	Connection type	Order Number	Weight 1 piece kg
XI 16 E1	16 / - / -	24 V DC	-	screw terminal	1SBP 26 0100 R1001	0.220
				spring-type terminal	1SBP 26 0600 R1001	0.220
XO 16 N1	- / 16 / -	-	24 V DC, 0.5 A	screw terminal	1SBP 26 0105 R1001	0.220
				spring-type terminal	1SBP 26 0605 R1001	0.220
XO 08 Y1	- / 8 / -	-	24 V DC, 2 A	screw terminal	1SBP 26 0108 R1001	0.220
				spring-type terminal	1SBP 26 0608 R1001	0.220
XO 08 R1	- / 8 / -	-	250 V AC, 2 A	screw terminal	1SBP 26 0101 R1001	0.220
				spring-type terminal	1SBP 26 0601 R1001	0.220
XO 08 R2 ①	- / 8 / -	-	250 V AC, 2 A	screw terminal	1SBP 26 0109 R1001	0.220
				spring-type terminal	1SBP 26 0609 R1001	0.220
XC 08 L1	- / - / 8	24 V DC	24 V DC, 0.5 A	screw terminal	1SBP 26 0102 R1001	0.220
				spring-type terminal	1SBP 26 0602 R1001	0.220
XK 08 F1	4 / 4 / -	24 V DC	250 V AC, 2 A	screw terminal	1SBP 26 0104 R1001	0.220
				spring-type terminal	1SBP 26 0604 R1001	0.220
XC 32 L1 ②	- / - / 32	24 V DC	24 V DC, 0.5 A	HE10 connector	1SBP 26 0110 R1001	0.220

Analogue I/O modules series 40..50

Description: see "Overview I/O modules".



XM 06 B5

Type	Number of AI / AO	Input signal	Output signal	Connection	Order Number	Weight 1 piece kg
XM 06 B5	4 / 2	± 10 V, ± 20 mA, 4 ... 20 mA, PT100, PT1000	± 10 V, 0 ... 20 mA, 4 ... 20 mA	screw terminal	1SBP 26 0103 R1001	0.220
				spring-type terminal	1SBP 26 0603 R1001	0.220
XE 08 B5	8 / -	± 10 V, ± 20 mA, 4 ... 20 mA, PT100, PT1000	-	screw terminal	1SBP 26 0106 R1001	0.220
				spring-type terminal	1SBP 26 0606 R1001	0.220
XC 32 L2 ③	8 / -	0-10 V	-	HE10 connector	1SBP 26 0111 R1001	0.220

Communication modules for Central Units of series 40..50

Networking interface for small-sized controller AC31 series 40..50. Connection with the central unit via ribbon cable. Voltage supply from central unit. Cable: see accessories.

Type	Protocol	Software	Interfaces	Order Number	Weight 1 piece kg
07 KP 53	MODBUS	included (in AC1131 and AC31GRAF)	2 independent MODBUS, RTU, Master or Slave (RS232/RS485)	1SBP 26 0162 R1001	0.220

Display series 40..50

Supplied by central unit or bus module

Type	Description	Order Number	Weight 1 piece kg
XTC 08	Display for 8 internal channels (4 digits + signs + selected channel)	1SBP 26 0107 R1001	0.220

① 4 normally open outputs + 4 normally open and normally closed outputs

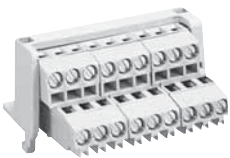
② 4 counters 20 kHz/4 frequency meters can be connected to prewiring system INTERFAST. HE10 not included

③ plus 24 configurable digitals (DC) Same as XC 32 L1, but 8 out of 32 DC can be used for AI 4 counters 20 kHz/4 frequency meters can be connected to prewiring system INTERFAST. HE10 not included

AC31 PLCs Accessories



07 SK 50



07 ST 50

Accessories series 40..50

Type	Accessories for	Description	Order Number	Weight 1 piece kg
07 SK 50	Central units Series 40 ... 50 MODBUS Coupler KP53	Programming cable. PC-Sub D, 9-poles	1SBN 26 0200 R1001	0.220
07 SK 52		Programming cable, without connector on the PC side	1SBN 26 0202 R1001	0.220
07 SK 51		Communication cable MODBUS/ASCII, PC-Sub D9 plug	1SBN 26 0201 R1001	0.100
07 SK53		Communication cable MODBUS/ASCII, without connector on the PC side	1SBN 26 0203 R1001	0.220
07 SG 50	Central units Series 40 ... 50	Simulation device for CPUs 8 switches	1SAY 11 0811 R0001	0.220
LAF100/HE10-20/UNI/662/UL [Ⓞ]	XC32L1 / XC32L2	Cable with HE10 connector for exten. I/O modules and naked wire on the other side length: 1 meter	003900706	
LAF150/HE10-20/UNI/662/UL [Ⓞ]	XC32L1 / XC32L2	Cable with HE10 connector for exten. I/O modules and naked wire on the other side length: 1.5 meters	003900825	
LAF200/HE10-20/UNI/662/UL [Ⓞ]	XC32L1 / XC32L2	Cable with HE10 connector for exten. I/O modules and naked wire on the other side length: 2 meters	003900906	
LAF300/HE10-20/UNI/662/UL [Ⓞ]	XC32L1 / XC32L2	Cable with HE10 connector for exten. I/O modules and naked wire on the other side length: 3 meters	003901104	
LAF500/HE10-20/UNI/662/UL [Ⓞ]	XC32L1 / XC32L2	Cable with HE10 connector for exten. I/O modules and naked wire on the other side length: 5 meters	003901322	
07 ST 50	CPUs and bus modules series 40..50, digital I/O modules	2-tier terminal for digital, 3-wire sensors / actuators, 2 pieces	1SBN 26 0300 R1001	0.220
07 ST 51	XM06B5, XE08B5	2-tier terminal for analogue, 3-wire sensors, 2 pieces	1SBN 26 0301 R1001	0.220
07 ST 52		2-tier spring-type terminal for digital, 3-wire sensors / actuators, 2 pieces	1SBN 26 0302 R1001	0.052
07 ST 54	CPUS and bus modules series 40..50	spring-type terminal set	1SBN 26 0311 R1001	0.052
07 ST 55	XI16E1, XO16N1, XE08B5	spring-type terminal set	1SBN 26 0312 R1001	0.052
07 ST 56	XO08R1, XC08L1, XK08F1	spring-type terminal set	1SBN 26 0313 R1001	0.052
07 ST 57	XM06B5	spring-type terminal set	1SBN 26 0314 R1001	0.052
	Series 40..50	labels for marking of the I/O channels	1SBN 26 0310 R1001	
Documentation	Series 40 ... 50	english	1SBC 26 0400 R1001	0.200

[Ⓞ] ref. to prewiring system INTERFAST documentation for additional information
INTERFAST harnesses are also available for Series 40 ... 50 central units + remote modules XI16E1, XO16N1, DC92