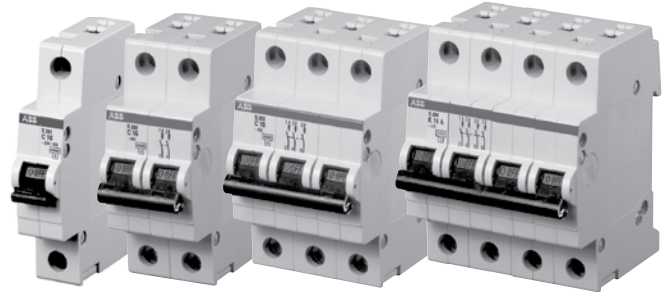


S200 Miniature circuit breakers



**System pro M compact
Miniature circuit breakers
S200, S200P, S200U, S200UP**



Description

The S2 Series of miniature circuit breakers offer a compact solution to protection requirements. The S2 devices are current limiting, DIN rail mounted and can offer a good equivalent to fused systems.

The S2 is available with application-specific trip characteristics to provide maximum circuit protection. The breakers offer thermal-magnetic trip protection according to B, C, D, K and Z characteristics.

For the worldwide market, the breakers carry UL, CSA, IEC, CE and many other agency approvals and certifications.

Features

- Current limiting
- Fast breaking time (2.5 – 3.5 msec)
- Unique bus connection system
- Wide range of accessories
- Available with variable depth handle mechanism
- Optional Z curve for SCR protection
- CE certified and marked
- DIN rail or front panel mounting
- Finger safe terminals
- Multi-function terminals
- Suitable for reverse feed
- 480Y/277VAC and 500VDC versions
- **UL489 Listed - branch circuit protective device. UL file # E212323**
- **UL1077 Recognized - supplemental protective device. UL file # E76126**

**UL Approved Miniature Molded
Case Circuit Breakers and
Supplemental Protectors**