

General information

Selection guide

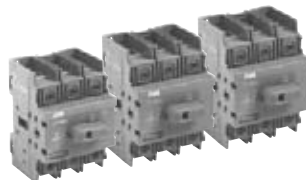
OT16E3 – OT160E3



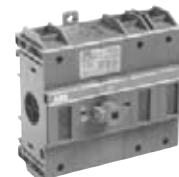
OT16E3 OT25E3 OT32E3



OT45E3 OT63E3



OT30E3 OT60E3 OT100E3



OT160E3

Catalog number	3 pole	OT16E3	OT25E3	OT32E3	OT45E3	OT63E3	OT30E3	OT60E3	OT100E3	OT160E3	
General purpose amp rating	A	16	25	40	60	80	30	60	100	125	
Catalog reference	Page #	18.10	18.10	18.10	18.10	18.10	18.10	18.10	18.10	18.20	
Approvals ①	2 pole	N/A	N/A	N/A	N/A	N/A	N/A	N/A	N/A	UL98	
	3 pole	UL508	UL508	UL508	UL508	UL508	UL508	UL508	UL98	UL98	
	4 pole	UL508	UL508	UL508	UL508	UL508	UL98	UL98	UL98	UL98	
Technical ratings – UL, CSA ②											
Max operating voltage	V	600	600	600	600	600	600	600	600	600	
Max horsepower rating											
Three phase											
240V	HP	5	7.5	10	15	20	10	20	30	40	
480V	HP	10	15	20	30	40	20	40	50	75	
600V	HP	10	20	25	30	40	30	40	50	100	
Single phase											
120V	HP	1	1.5	2	2	2	2	3	5	7.5	
240V	HP	2	3	5	5	5	5	7.5	15	20	
Technical ratings – IEC ②											
Rated insulation and operational voltage. AC20 and DC20											
	V	750	750	750	750	750	750	750	750	750	
Rated thermal current, I _n											
AC 20/DC 20	open	25	32	40	63	80	40	63	115	200	
AC 20/DC 20	enclosed	25	32	40	63	80	40	63	115	160	
AC 21A	≤500V	16	25	32	63	80	40	63	100	160	
	≤690V	16	25	32	63	80	40	63	100	160	
Rated operational power AC23											
	400/415V	7.5	9	11	22	37	15	18.5	37	75	
	690V	7.5	9	11	15	18.5	15	15	37	75	
Physical characteristics											
Weight ③	3 pole	lb	0.24	0.24	0.24	0.59	0.59	0.79	0.79	2.42	
Dimension	3 pole	H	in	2.68	2.68	2.68	3.60	3.60	3.94	3.94	5.00
		W	in	1.38	1.38	1.38	2.07	2.07	2.76	2.76	4.96
		D	in	2.20	2.20	2.20	2.85	2.85	2.95	2.95	2.95
Accessories											
Terminal lug kit		Integral	Integral	Integral	Integral	Integral	Integral	Integral	Integral	Integral	
Terminal shroud		•	•	•	•	•	•	•	•	—	
Auxiliary contact		•	•	•	•	•	•	•	•	•	
Handle UL/NEMA type	Type 1, 3R, 12	•	•	•	•	•	•	•	•	•	
	Type 1, 3R, 4, 4X, 12	•	•	•	•	•	•	•	•	•	
Handle type	Selector	•	•	•	•	•	•	•	•	—	
	Pistol	•	•	•	•	•	•	•	•	•	
Conversion kits	6 pole	•	•	•	•	•	•	•	•	•	
	Transfer	•	•	•	•	•	•	•	•	•	
	Bypass	•	•	•	•	•	•	•	•	•	
	Mechanical interlock	•	•	•	•	•	•	•	•	•	
Electrical interlock		—	—	—	—	—	—	—	—	—	

• = Available
— = Not available

UL listed, CSA approved, IEC rated, CE marked

① UL listed switches are also CSA approved.
② For complete technical information please see page 18.38 – 18.70.
③ Switch only.