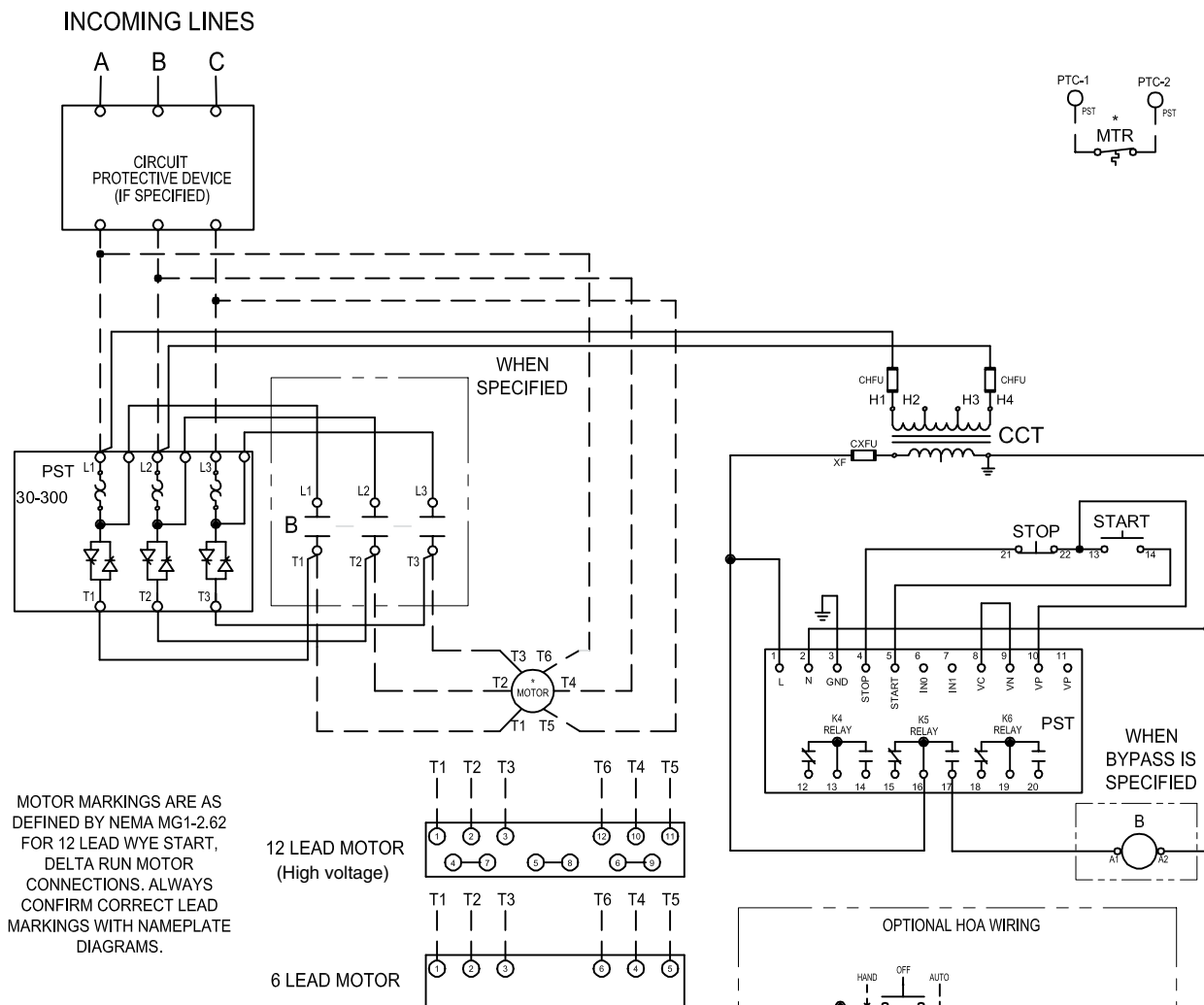


Circuit diagrams PST30 – PST300 Inside Delta

Softstarters
Type PST

6

PST30 – PST300



MOTOR MARKINGS ARE AS DEFINED BY NEMA MG1-2.62 FOR 12 LEAD WYE START, DELTA RUN MOTOR CONNECTIONS. ALWAYS CONFIRM CORRECT LEAD MARKINGS WITH NAMEPLATE DIAGRAMS.

12 LEAD MOTOR (High voltage)

6 LEAD MOTOR

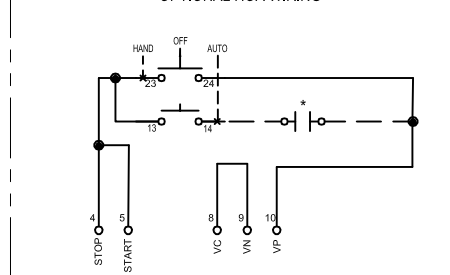
CONNECTION TORQUE: CONSULT SOFT STARTER MANUAL FOR WIRE TORQUE SPECIFICATIONS.

LEGEND	
CCT	CONTROL CIRCUIT TRANSFORMER
CHFU	CCT PRIMARY FUSE
CXFU	CCT SECONDARY FUSE
B	BYPASS CONTACTOR
PTC	THERMAL COUPLE
o 13	CONN POINT ON DEVICE WITH NUMBER
*	REMOTE DEVICE
⊗	CONNECTION POINT AT TERMINAL BLOCK

PST NOTES:

1. PROG. INPUT In0 FACTORY SET FOR RESET FAULT/OL.
2. PROG. RELAY K4 FACTORY SET FOR RUN.
3. PROG. RELAY K5 FACTORY SET FOR AT SPEED.
4. PROG. RELAY K6 FACTORY SET FOR EVENT.
5. FUNCTION MOT 1 le MUST BE SET TO MOTOR FLA.

OPTIONAL HOA WIRING



NOTES

1. ALL CONTROL WIRING TO BE 14 GA. COLOR OF CONTROL WIRE SHALL BE PER VOLTAGE ON CONTACTOR COILS:

RED-ALL AC VOLTAGES
WHITE MAY BE USED ON THE GROUNDED SIDE OF THE AC CIRCUIT IF SPECIFIED.

BLUE-ALL DC VOLTAGES

2. ALL DEVICES ARE SHOWN DE-ENERGIZED.
3. DO NOT USE SELECTOR SWITCHES WITH AUTO-RESET OVERLOAD RELAYS.