


ProgramaCube®

KSPD Series Dual Function

Timing Module (1A Solid State Output)





US Patent 6708135

10 YEAR WARRANTY

- Choose 1 of 6 Standard Dual Functions
- Factory Programmed
- Microcontroller Circuitry, +/-0.5% Repeat Accuracy
- 1 A Steady, 10 A Inrush
- Universal Voltage 24 ... 240 V AC
- Delays from 100 ms ... 1000 h in 9 Ranges
- Onboard, External Adjust or Fixed Time Delay

[Complete Product Details: http://www.ssac.com/pp1.htm](http://www.ssac.com/pp1.htm)

Accessories

- 100 K Ohm External adjust potentiometer
P/Ns: P1004-95 (fig A) P1004-95-X (fig B)
- Versa-knob
P/N: P0700-7
- DIN rail P/Ns: 017322005 (Steel)
- DIN rail adaptor
P/N: P1023-20

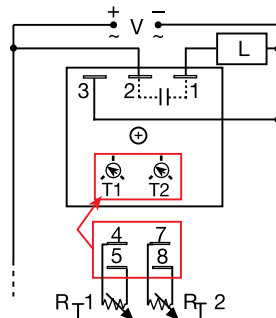
See accessory pages



Choose from 1 of 6 standard dual functions, fixed or onboard or external adjustment, and 9 time ranges. All available through the QuickShip program.

The KSPD Series is a factory programmed module available with 1 of 6 standard dual functions. Modules are manufactured without the function assigned. When an order is received, the function and time delay software are added. This approach provides QuickShip delivery on all adjustment options and time ranges. The solid state output provides 100 million operations, typical. Encapsulation protects against shock, vibration, and humidity. The KSPD Series is a cost effective approach for OEM applications that require small size and long life.

Connection



Terminal Location for External Adjustment.

V = Voltage T1 & R_{T1} = First Adjustment
L = Load T2 & R_{T2} = Second Adjustment

A knob is supplied for adjustable units or R_T terminals for external adjust. Use a 100 K ohm potentiometer for full time range adjustment. Dashed lines are internal connections.

**Function Chart

Delay On Make/Recycle (ON Time First, Equal Times)	MRE	Code
Delay On Make/Interval	MI	
Interval/Recycle (ON Time First, Equal Times)	IRE	
Recycle (Both Times Adjustable, ON Time First)	RXE	
Recycle (Both Times Adjustable, OFF Time First)	RXD	
Interval/Delay On Make	IM	

See page 10 for function time diagrams

Technical Data

Output	
Rating	1 A steady, 10 A inrush for 16 ms
Mechanical	
Mounting	Surface mt. with one #10 (M5 x 0.8) screw
Package	2 x 2 x 1.21 in. (50.8 x 50.8 x 30.7 mm)
Termination	0.25 in. (6.35 mm) male quick connects

KSPD Series	X Input	X First Adjustment	X First Time Delay* (T1 or R _{T1})	X Second Adjustment	X Second Time Delay* (T2 or R _{T2})	X Function**
	A - 24 ... 240 V AC	-1 - Fixed	-1 - 0.1 ... 10 s	-1 - Fixed	-1 - 0.1 ... 10 s	Specify Function (Refer to Function Chart for Code)
	P - 12 ... 120 V DC Positive Switching	-2 - Onboard Adjust	-2 - 1 ... 100 s	-2 - Onboard Adjust	-2 - 1 ... 100 s	
	N - 12 ... 120 V DC Negative Switching	-3 - External Adjust	-3 - 10 ... 1000 s	-3 - External Adjust	-3 - 10 ... 1000 s	
			-4 - 0.1 ... 10 m		-4 - 0.1 ... 10 m	
			-5 - 1 ... 100 m		-5 - 1 ... 100 m	
			-6 - 10 ... 1000 m		-6 - 10 ... 1000 m	
			-7 - 0.1 ... 10 h		-7 - 0.1 ... 10 h	
			-8 - 1 ... 100 h		-8 - 1 ... 100 h	
			-9 - 10 ... 1000 h		-9 - 10 ... 1000 h	

*If Fixed Delay is selected, insert delay [0.1 ... 999] followed by (S) secs., (M) mins., or (H) hrs.

Example P/N:

KSPDA2525MRE = 24...240V AC, onboard adjustment, T1=1...100 m, T2=1...100 m, delay on make /recycling - ON time first
KRPDD10.5S110SMB = 24...240V AC, fixed delays, T1= 0.5 sec., T2 = 15 sec. recycling - both times adjustable, ON time first.

KSPDpp 01.03.08