

## IEC Technical data

### EK110 – EK1000

#### Connecting Characteristics

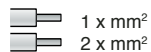
Contactor types: EK...

Main terminals  
Flat type

Connecting capacity (min. ... max.)

Main conductors (poles)

Rigid:



Rigid with connector

single for Cu cable mm²

single for Al/Cu cable mm²

double for Al/Cu cable mm²

Flexible

1 x mm²

2 x mm²

Bars or lugs



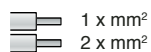
L mm ≤

Ø mm >

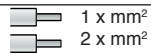
Auxiliary conductors

(coil terminals)

Rigid solid



Flexible with cable end



Lugs



L mm ≤

l mm >

Degree of protection acc. to IEC 60947-1 / EN 60947-1 and IEC 60529 / EN 60529

– Main terminals

– Coil terminals

Screw terminals

Main terminals

Coil terminals (delivered in open position)

Tightening torque

Main pole terminals

– recommended

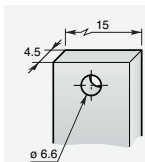
– max.

Coil terminals

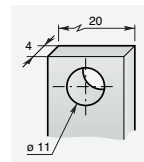
– recommended

– max.

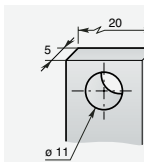
110



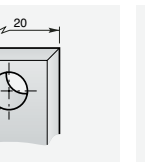
150



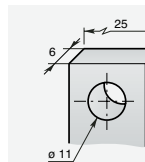
175



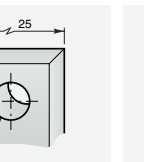
210



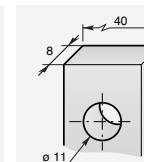
370



550



1000



25 ... 185

10 ... 70

–

30

6

0.5 ... 2.5

0.5 ... 2.5

0.5 ... 2.5

0.5 ... 2.5

8

3.7

Protection against direct contact acc. to VDE 0106 - Part. 100

IP 00

IP 20

Screws and bolts

M6

M10

M3.5 (+,-) pozidriv 2 screws with cable clamp

5 / 44

6

18 / 160

22

1.00 / 9

1.20