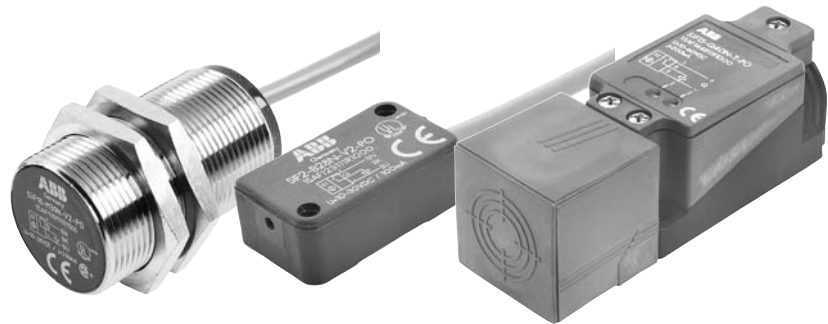


Proximity Sensors



Proximity sensors Inductive Capacitive



General information

Inductive & capacitive

- Non-contact sensing
- Extremely long life
- High speed switching frequency
- Short circuit protection
- AC & DC models

Inductive

- Metallic objects only
- Sensing distances from 0.8 to 50mm
- Large selection of 2 wire, 3 wire and 4 wire models
- Choice of quick disconnect, cable or terminal connection
- Stainless steel, Nickel-plated brass or Crastin housings

Capacitive

- Nonmetallic objects (paper, cardboard, plastic, etc.)
- Fluids & metallic objects
- 10mm sensing range
- Objects may be sensed through glass or plastic
- Choice of quick disconnect or cable
- Stainless steel housing

10