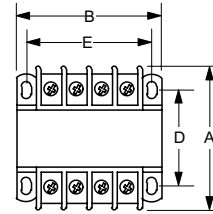
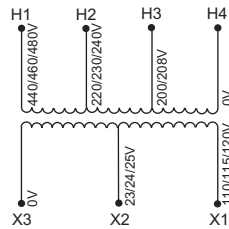


Transformers with CE Mark

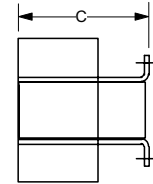


TC4050F1

Primary voltage - 200/220/440V, 208/230/460V, 240/480V
Secondary voltage - 23/110V, 24/115V, 25/120V



Top View



Side View

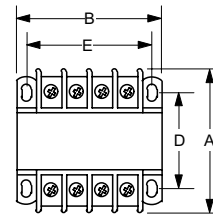
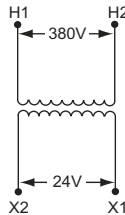
VA rating	Catalog number	List price	Output amps	Dimensions (inches • mm)					Mounting slots	Approx. wt. Lbs • kg
				A	B	C	D	E		
50	TC4050F1	\$ 62	2.08/44	3 1/4 • 83	3 3/8 • 86	3 1/4 • 83	2 1/4 • 57	2 13/16 • 71	203 X .460 • 5.1x11.7	4.2 • 1.6
75	TC4075F1	70	3.13/65	3 3/8 • 92	3 3/4 • 95	3 1/2 • 89	2 1/2 • 64	2 3/8 • 79	203 X .460 • 5.1x11.7	5.9 • 2.7
100	TC4100F1	91	4.17/87	4 3/8 • 111	3 3/4 • 95	3 1/2 • 89	3 1/2 • 81	3 1/8 • 79	203 X .460 • 5.1x11.7	7.9 • 3.6
150	TC4150F1	109	6.25/13	4 3/8 • 111	4 1/2 • 114	4 • 102	2 3/16 • 71	3 3/4 • 95	203 X .460 • 5.1x11.7	10.0 • 4.6
200	TC4200F1	127	8.33/174	5 • 127	4 1/2 • 114	4 • 102	3 7/16 • 87	3 3/4 • 95	203 X .460 • 5.1x11.7	12.8 • 5.8
250	TC4250F1	146	10.42/217	5 1/2 • 140	4 1/2 • 114	4 • 102	4 7/16 • 103	3 3/4 • 95	203 X .460 • 5.1x11.7	15.2 • 6.9
300	TC4300F1	172	12.5/261	5 3/8 • 137	5 1/4 • 133	4 1/2 • 114	4 1/8 • 105	4 3/8 • 111	.312 X .687 • 8x17.5	16.8 • 7.6
350	TC4350F1	178	14.58/304	5 1/2 • 140	5 1/4 • 133	4 1/2 • 114	4 3/4 • 108	4 3/8 • 111	.312 X .687 • 8x17.5	19.2 • 8.7
500	TC4500F1	204	20.84/435	7 1/4 • 184	5 1/4 • 133	4 1/2 • 114	6 • 153	4 3/8 • 111	.312 X .687 • 8x17.5	27.0 • 12.3

Note: No integral fusing capability. Supplied with touch-safe terminal covers installed.

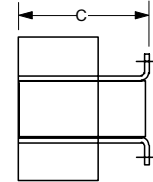
Primary voltage - 380V
Secondary voltage - 24V



TC3050F



Top View



Side View

VA rating	Catalog number	List price	Output amps	Dimensions (inches • mm)					Mounting slots	Approx. wt. Lbs • kg
				A	B	C	D	E		
50	TC3050F	\$ 57	2.08	3 1/4 • 83	3 • 76	3 • 76	2 1/4 • 57	2 1/2 • 64	203 X .460 • 5.1x11.7	3.5 • 1.6
75	TC3075F	64	3.13	3 1/4 • 83	3 3/8 • 86	3 • 83	2 1/4 • 57	2 3/8 • 71	203 X .460 • 5.1x11.7	4.2 • 1.9
100	TC3100F	76	4.17	3 3/4 • 92	3 3/4 • 95	3 1/4 • 89	2 1/2 • 64	3 1/8 • 79	203 X .460 • 5.1x11.7	5.9 • 2.7
150	TC3150F	101	6.25	4 1/8 • 105	3 3/4 • 95	3 1/2 • 89	3 • 76	3 3/8 • 79	203 X .460 • 5.1x11.7	7.3 • 3.3
200	TC3200F	114	8.33	4 1/4 • 108	4 1/2 • 114	4 • 102	2 3/16 • 71	3 3/4 • 95	203 X .460 • 5.1x11.7	9.6 • 4.4
250	TC3250F	125	10.42	4 3/4 • 121	4 1/2 • 114	4 • 102	3 3/16 • 81	3 3/4 • 95	203 X .460 • 5.1x11.7	11.3 • 5.1
300	TC3300F	139	12.50	5 1/4 • 130	4 1/2 • 114	4 • 102	3 3/4 • 95	3 3/4 • 95	203 X .460 • 5.1x11.7	13.2 • 6.0
350	TC3350F	161	14.58	5 • 127	5 1/4 • 133	4 1/2 • 114	3 3/4 • 95	4 • 111	.312 X .687 • 8x17.5	14.9 • 6.8
500	TC3500F	179	20.83	5 1/2 • 140	5 1/4 • 133	4 1/2 • 114	4 3/4 • 108	4 3/8 • 111	.312 X .687 • 8x17.5	19.2 • 8.7
750	TC3750F	267	31.25	7 3/8 • 187	5 1/4 • 133	4 1/2 • 114	5 3/4 • 146	4 3/8 • 111	.312 X .687 • 8x17.5	29.8 • 13.6

Note: No integral fusing capability. Supplied with touch-safe terminal covers installed.