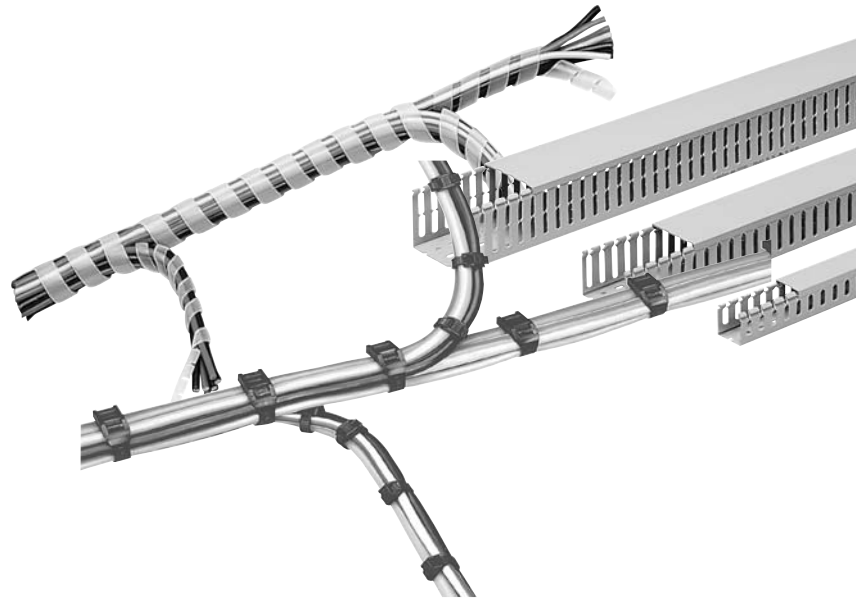


Cable management systems



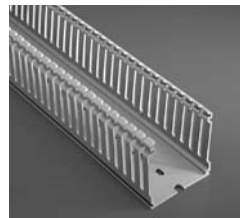
Cable management systems

- Wire duct
- Cable ties
- Spiral wrap

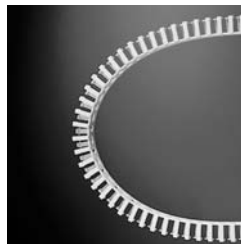


General information

Those requiring considerable space for cables will find their needs met by ABB cable management systems, now also available in the 100 mm height and in a choice of six different base sizes (25, 40, 60, 80, 100 and 150 mm). New wiring ducts join the established designs (with heights between 17 and 80 mm), bringing to 28 the total size combinations offered, all available with 8 – 12 mm and 4 – 6 mm slots.



Less complicated work brings installers and panel builders faster solutions thanks to the new top profile of the ribs.



The new flexible thermoplastic wiring ducts solve every electrical switchboard and distribution switchboard wiring problem.

The best solution for hinged panels and doors are our new flexible thermoplastic cable management systems (available in seven sizes), which are ideal for every situation in which wiring is subject to flexion or torsion.

A new design of cable management systems with circular knockouts in the sides to facilitate branch connections using rigid and corrugated conduits has also been introduced for environments in which cables require greater protection against external agents (elevator rooms are a typical example).



New wiring ducts with circular knockouts in the sides are available for any specific kind of branch connections.

The updated range is completed by installation accessories and tools: plastic rivets, wire stops, label tags, new wiring ducts bases, a new rivet gun and shears.

The top profile of the ribs of these wiring ducts has been redesigned to make it easier to open and close the cover and to ensure even more secure engagement.



All in one movement: thanks to the controlled splaying of the sides, gentle pressure is all it takes to fix the cover on the duct, forming a perfect seal in all conditions, even in environments that reach high temperatures.

To release it, simply press the ribs inwards with one hand.

continued next page