

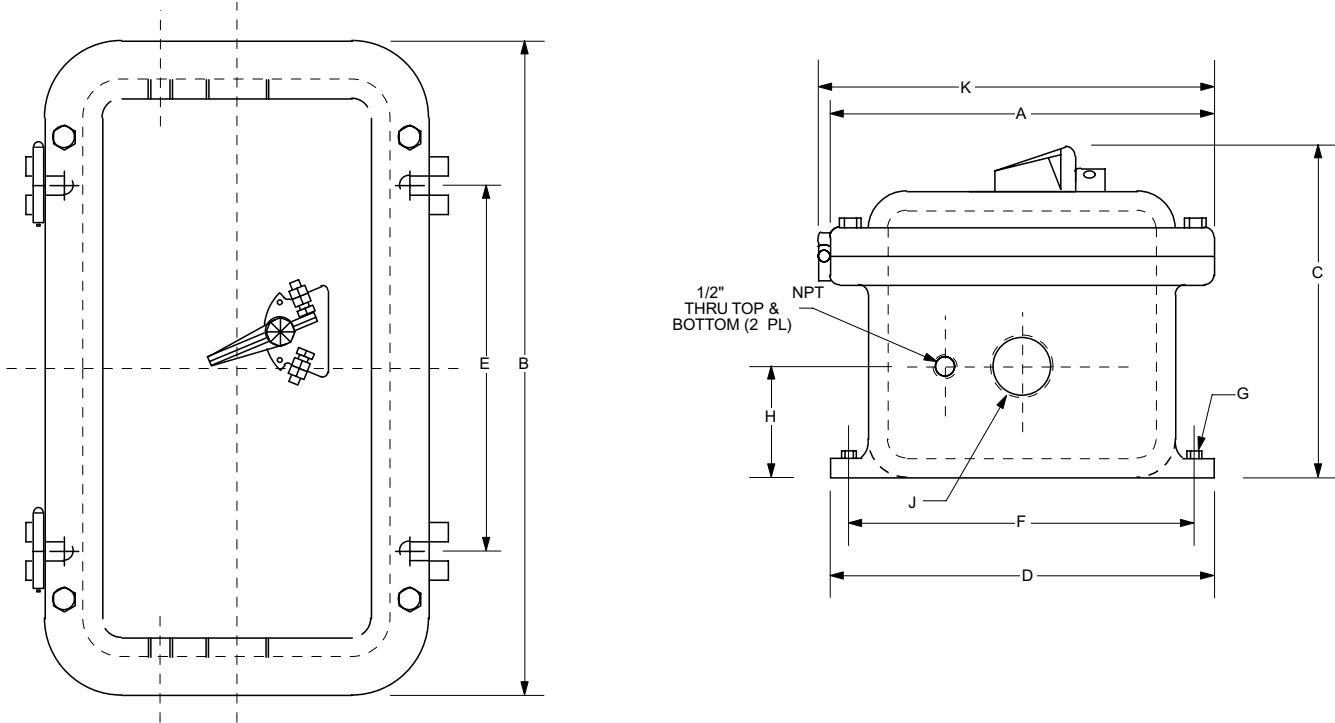


## Approximate dimensions

### S1 – S7 enclosures

### NEMA 7 & 9

#### NEMA 7 & 9



Breaker type	A	B	C	D	E	F	G	H	J	K	Wgt.(lbs)
S3 ≤ 60A	9.25 235.0	14.25 362.0	9.00 228.6	10.00 254.0	7.5 190.5	9.13 231.9	3/8 9.5	2.50 63.5	1.50 38.1	10.25 260.4	32
S3 ≤ 100A	9.25 235.0	16.25 412.8	9.00 228.6	10.00 254.0	9.50 241.3	9.13 231.9	3/8 9.5	2.50 63.5	2.00 50.8	10.25 260.4	37
S3 ≤ 225A	10.38 263.7	21.63 549.4	9.00 228.6	11.00 279.4	14.50 368.3	9.75 247.7	3/8 9.5	2.75 69.9	2.50 50.8	11.25 285.8	70
S4 ≤ 250A	16.25 412.75	24.25 616.0	10.00 254.0	18.00 457.2	14.38 365.3	15.75 400.0	1/2 12.7	3.25 82.6	2.50 50.8	17.25 438.2	122
S5 ≤ 400A	16.25 412.75	28.25 717.6	11.00 279.4	18.00 457.2	18.38 466.9	15.75 400.0	1/2 12.7	3.63 92.2	3.00 76.2	17.25 438.2	145
S6 ≤ 600A	16.25 412.75	34.25 889.0	11.00 279.4	18.00 457.2	23.00 584.2	15.75 400.0	1/2 12.7	4.50 114.3	4.00 101.6	17.25 438.2	210
S6 ≤ 800A	16.25 412.75	40.25 1041.4	13.50 244.6	18.00 457.2	29.00 736.6	15.75 400.0	1/2 12.7	4.50 114.3	4.00 101.6	17.25 438.2	240
S7 ≤ 1200A	16.25 412.75	50.25 1298.7	13.50 295.4	18.00 457.2	39.00 990.6	15.75 400.0	5/8 13	4.50 114.3	4.00 101.6	17.25 438.2	350