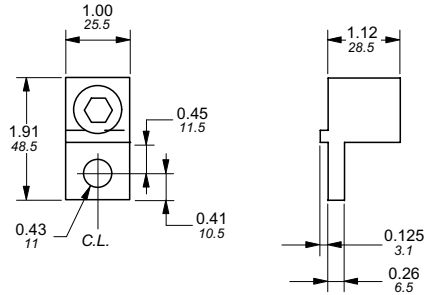


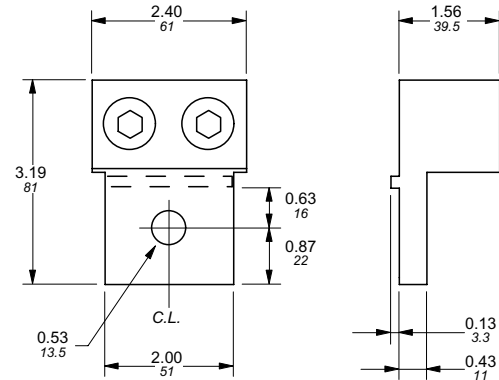
Approximate dimensions for Terminal lugs

00.00 Inches
00.00 [Millimeters]

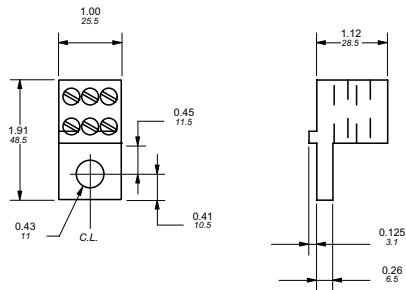
OZXA-25 — for use with 200A switches



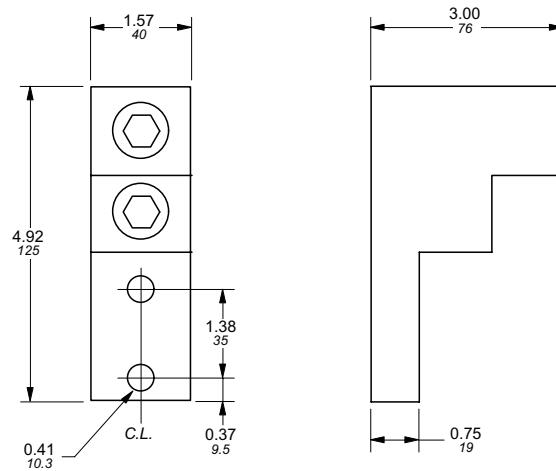
OZXA-27 — for use with 600A switches



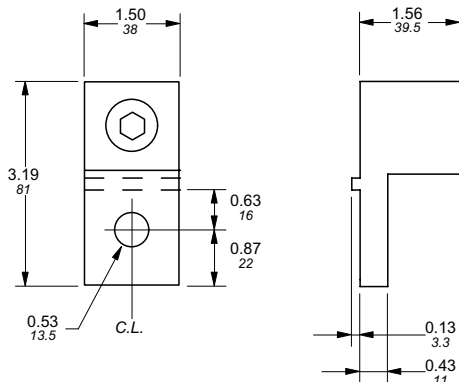
OZXA-175 — for use with 200A switches



OZXA-30 — for use with 800A switches



OZXA-26 — for use with 400A switches



OZXA-28 & OZXA-28/2 — for use with 1200A – 3150A switches

