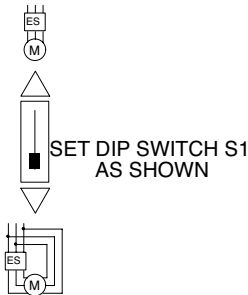
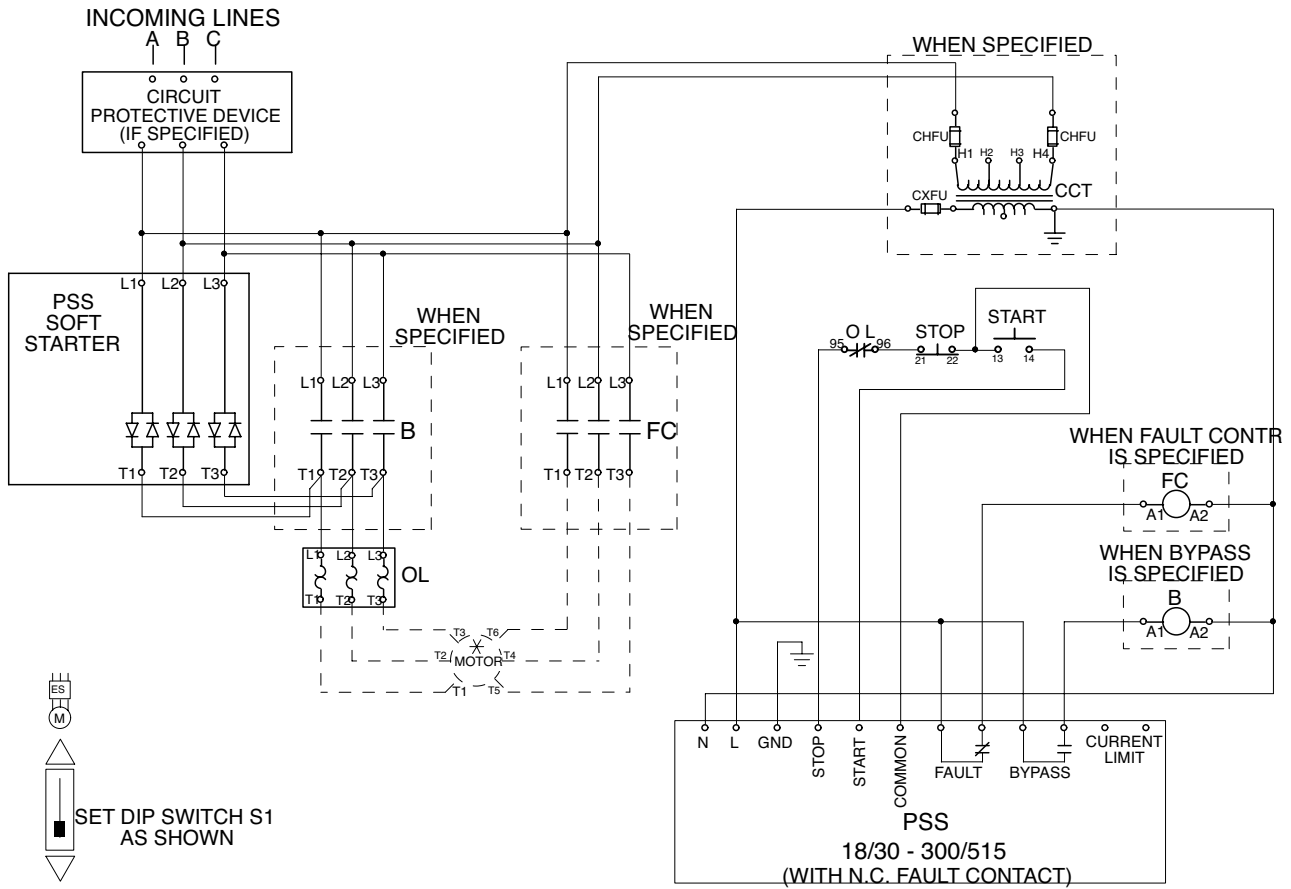


Circuit diagrams

PSS18/30 – PSS300/515, Delta motor configuration

Fault contactor

Softstarters
Type PSS



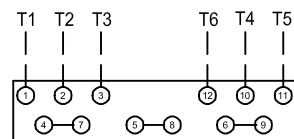
NOTES

- ALL CONTROL WIRING TO BE 18GA. COLOR OF CONTROL WIRE SHALL BE PER VOLTAGE OF CONTACTOR COILS:
RED - ALL AC VOLTAGES
WHITE MAY BE USED ON THE GROUNDED SIDE OF THE AC CIRCUIT IF SPECIFIED.
BLUE - ALL DC VOLTAGES
- ALL DEVICES ARE SHOWN DE-ENERGIZED.
- DO NOT USE SELECTOR SWITCHES WITH AUTO-RESET OVERLOAD RELAYS.

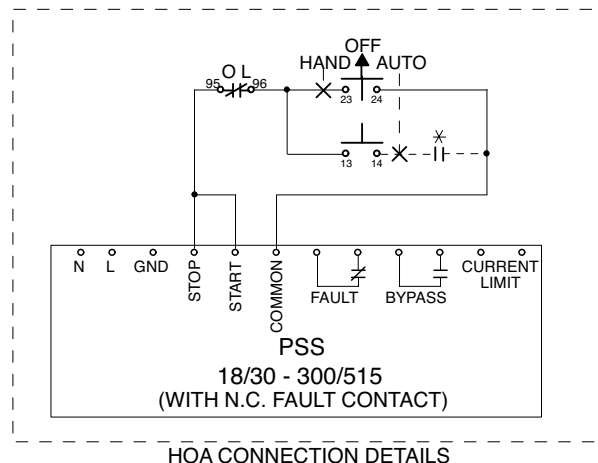
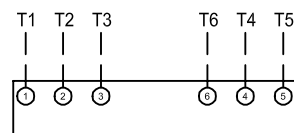
LEGEND	
CCT	CONTROL CIRCUIT TRANSFORMER
CHFV	CCT PRIMARY FUSE
CXFU	CCT SECONDARY FUSE
B	BYPASS CONTACTOR
OL	OVERLOAD RELAY
o ₁₃	CONN POINT ON DEVICE WITH NUMBER
X	REMOTE DEVICE
∅	CONN POINT AT TERMINAL BLOCK

MOTOR MARKINGS ARE AS DEFINED BY NEMA MG1-2.62 FOR 12 LEAD WYE START, DELTA RUN MOTOR CONNECTIONS. ALWAYS CONFIRM CORRECT LEAD MARKINGS WITH NAMEPLATE DIAGRAMS.

12 LEAD MOTOR
(High voltage)



6 LEAD MOTOR



6