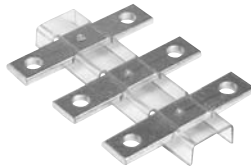
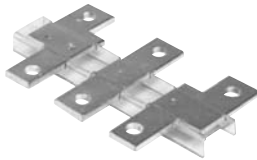


# Accessories

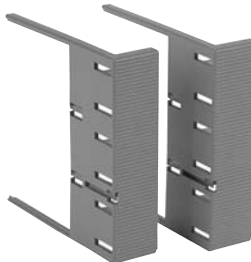
Softstarters  
Type PST



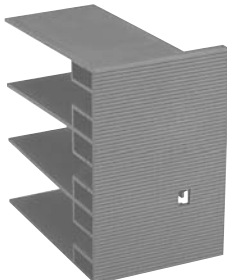
LX400



LW185



LT185-AC



LT460-AC

## Terminal extension pieces (set of 3) ③

| Softstarter Type | Dimensions |          | Weight lbs. | Catalog number | List price |
|------------------|------------|----------|-------------|----------------|------------|
|                  | Hole (mm)  | Bar (mm) |             |                |            |
| PST85 – 142      | 8.5        | 17.5 x 5 | 0.55        | LX185          | \$ 90      |
| PST175 – 300     | 10.5       | 20 x 5   | 0.77        | LX300          | 140        |
| PST370 – 470     | 10.5       | 25 x 5   | 1.1         | LX460          | 195        |
| PST570 – 1050    | 13         | 40 x 6   | 1.9         | LX750          | 225        |

Delivered with straps to prevent them from rotating.

## Terminal enlargement pieces (set of 3) ③

| Softstarter Type | Dimensions |          | Weight lbs. | Catalog number | List price |
|------------------|------------|----------|-------------|----------------|------------|
|                  | Hole (mm)  | Bar (mm) |             |                |            |
| PST30 – 72       | 6.5        | 15 x 3   | 0.22        | LW110          | \$ 15      |
| PST85 – 142      | 10.5       | 17.5 x 5 | 0.55        | LW185          | 120        |
| PST175 – 300     | 10.5       | 20 x 5   | 0.99        | LW300          | 130        |
| PST370 – 470     | 10.5       | 25 x 5   | 1.6         | LW460          | 295        |
| PST570 – 1050    | 13         | 40 x 6   | 2.7         | LW750          | 355        |

Delivered with straps to prevent them from rotating.

## Terminal shrouds ③

| Softstarter Type | Required quantity             | Weight lbs. | Catalog number       | List price |
|------------------|-------------------------------|-------------|----------------------|------------|
| PST85 – 142      | (1) - LT185-AC & (1) LT460-AC | 0.11        | LT185-AC<br>LT460-AC | \$ 10      |
|                  |                               | 0.22        |                      | 20         |
| PST85 – 142      | (1) - LT185-AL & (1) LT460-AL | 0.48        | LT185-AL<br>LT460-AL | 10         |
|                  |                               | 1.8         |                      | 20         |
| PST175 – 300     | LT300-AC ⑤                    | 0.15        | LT300-AC             | 10         |
|                  |                               | 0.62        |                      | 10         |
| PSTB370 – 470    | LT460-AC                      | 0.22        | LT460-AC             | 20         |
|                  |                               | 1.8         |                      | 20         |
| PSTB570 – 1050   | LT750-AC                      | 0.26        | LT750-AC             | 20         |
|                  |                               | 1.8         |                      | 20         |

## Control transformers

| PST Amp ratings | Standard VA | Price adder for extra VA |        |        |        |
|-----------------|-------------|--------------------------|--------|--------|--------|
|                 |             | 100VA                    | 250VA  | 500VA  | 750VA  |
| 9 – 68          | 50          | \$ 175                   | —      | —      | —      |
| 69 – 130        | 75          | 225                      | \$ 300 | —      | —      |
| 131 – 480       | 250         | 360                      | 400    | \$ 500 | \$ 625 |
| 481 – 1050      | 750         | —                        | 725    | —      | 975    |

## Terminal lug kits ①

| Wire range                  | For softstarter ②  | Catalog number | List price |
|-----------------------------|--------------------|----------------|------------|
| #6 - 250 MCM (1 per phase)  | PST85 – PST142     | PSLK-185 ④     | \$ 150     |
| #4 - 400 MCM (1 per phase)  | PST175 – PST300    | PSLK-300 ④     | 195        |
| #4 - 500 MCM (2 per phase)  | PST175 – PST300    | PSLK-300/2 ④   | 280        |
| 2/0 - 500 MCM (2 per phase) | PSTB370 – PSTB470  | PSLK-580/2     | 350        |
| 2/0 - 500 MCM (3 per phase) | PSTB570 – PSTB1050 | PSLK-750/3     | 525        |

① Includes line/load lugs and hardware.

② Softstarters listed are provided with terminating bus tabs as standard.

③ Use Discount Schedule ABA.

④ Must order two sets if using bypass contactor.

⑤ Requires two sets.