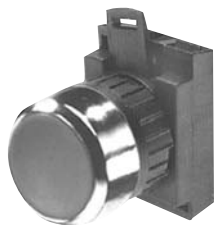
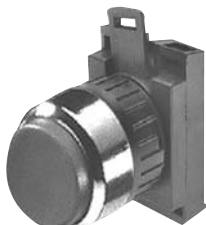


Non-illuminated Flush & extended pushbuttons Momentary



CBK-MPR



CBK-MPER



CBK-CB10



KCB-02

Non-Illuminated, momentary

Type	Black plastic ring		Chrome metal ring	
	Catalog number	List price	Catalog number	List price
Flush button Red Green Yellow Blue Black Clear ① White	CBK-KPR CBK-KPG CBK-KPY CBK-KPL CBK-KPB CBK-KPC CBK-KPW	\$ 8.10	CBK-MPR CBK-MPG CBK-MPY CBK-MPL CBK-MPB CBK-MPC CBK-MPW	\$ 8.10
Extended button Red Green Yellow Blue Black Clear ① White	CBK-KPER CBK-KPEG CBK-KPEY CBK-KPEL CBK-KPEB CBK-KPEC CBK-KPEW	8.10	CBK-MPER CBK-MPEG CBK-MPEY CBK-MPEL CBK-MPEB CBK-MPEC CBK-MPEW	8.10

Contact blocks (Maximum 6 per operator)

Item	Separate contact blocks catalog number	Included with operator suffix code	List price adder
1 N.O. 1 N.C.	CBK-CB10 CBK-CB01	10 01	\$ 8.00
1 N.O. & 1N.C. 2 N.O. 2 N.C.	CBK-CB10 + CBK-CB01 CBK-CB10 + CBK-CB10 CBK-CB01 + CBK-CB01	11 20 02	16.00

Pushbuttons are complete except for contact blocks:

- To order a pushbutton operator complete with contact block, add the appropriate suffix code to the end of the catalog number and add the list price adder to the operator list price. EX: CBK-KPR10, **\$ 16.10**
- To order just the contact block, refer to "Separate contact blocks" column and indicate catalog number and quantity. EX: CBK-CB10, qty 1, **\$ 8.00**

Example of individual component ordering

$$\text{CBK-KPR} \quad + \quad \text{CBK-CB10} \quad = \quad \text{CBK-KPR10}$$

$$\text{\$ 8.10} \quad + \quad \text{\$ 8.00} \quad = \quad \text{\$ 16.10}$$

5 Contact block holders (Maximum 6 contact blocks)

To order an assembled unit with a 5 contact block holder, add the digit "5" to the end of the catalog number and add \$ 4.00 to the list price. EX: CBK-KPR5, **\$ 12.10**

To order double contact blocks used with the 5 block holder, order the following combinations separately:

Item	Catalog number	Price
2 NO 2 NC	KCB-20 KCB-02	\$ 16.00
1 NO & 1 NC	KCB-11	

① To order a lens insert, use the pushbutton with a clear lens and refer to the lens insert selection chart on pages 8.44 - 8.45. Place the appropriate suffix code at the end of the catalog number (but before the contact block suffix code, if there is one) and add \$.90 to the list price. EX: CBK-KPCC410