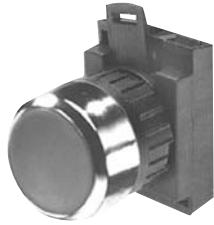
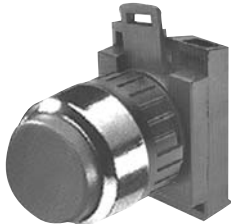


Non-illuminated Flush & extended pushbuttons Maintained

Pilot Devices
Type CBK 22mm



CBK-MPPR



CBK-MPPER



CBK-CB10



KCB-02

Non-Illuminated, maintained — push-push

Type	Black plastic ring		Chrome metal ring	
	Catalog number	List price	Catalog number	List price
Flush button				
Red	CBK-KPPR	\$ 19.30	CBK-MPPR	\$ 19.30
Green	CBK-KPPG		CBK-MPPG	
Yellow	CBK-KPPY		CBK-MPPY	
Blue	CBK-KPPL		CBK-MPPL	
Black	CBK-KPPB		CBK-MPPB	
Clear ①	CBK-KPPC		CBK-MPPC	
White	CBK-KPPW		CBK-MPPW	
Extended button				
Red	CBK-KPPER	19.30	CBK-MPPER	19.30
Green	CBK-KPPEG		CBK-MPPEG	
Yellow	CBK-KPPEY		CBK-MPPEY	
Blue	CBK-KPPEL		CBK-MPPEL	
Black	CBK-KPPEB		CBK-MPPEB	
Clear ①	CBK-KPPEC		CBK-MPPEC	
White	CBK-KPPEW		CBK-MPPEW	

Contact blocks (Maximum 6 per operator)

Item	Separate contact blocks catalog number	Included with operator suffix code	List price adder
1 N.O. 1 N.C.	CBK-CB10 CBK-CB01	10 01	\$ 8.00
1 N.O. & 1N.C. 2 N.O. 2 N.C.	CBK-CB10 + CBK-CB01 CBK-CB10 + CBK-CB10 CBK-CB01 + CBK-CB01	11 20 02	16.00

Pushbuttons are complete except for contact blocks:

- To order a pushbutton operator complete with contact block, add the appropriate suffix code to the end of the catalog number and add the list price adder to the operator list price. EX: CBK-KPPR10, **\$ 27.30**
- To order just the contact block, refer to "Separate contact blocks" column and indicate catalog number and quantity. EX: CBK-CB10, qty 1, **\$ 8.00**

Example of individual component ordering

$$\text{CBK-KPPR} \quad + \quad \text{CBK-CB10} \quad = \quad \text{CBK-KPPR10}$$

$$\text{\$ 19.30} \quad + \quad \text{\$ 8.00} \quad = \quad \text{\$ 27.30}$$

5 Contact block holders (Maximum 6 contact blocks)

To order an assembled unit with a 5 contact block holder, add the digit "5" to the end of the catalog number and add \$ 4.00 to the list price. EX: CBK-KPPR5, **\$ 23.30**

To order double contact blocks used with the 5 block holder, order the following combinations separately:

Item	Catalog number	Price
2 NO	KCB-20	\$ 16.00
2 NC	KCB-02	
1 NO & 1 NC	KCB-11	

① To order a lens insert, use the pushbutton with a clear lens and refer to the lens insert selection chart on pages 8.44 - 8.45. Place the appropriate suffix code at the end of the catalog number (but before the contact block suffix code, if there is one) and add \$.90 to the list price. EX: CBK-KPCC410