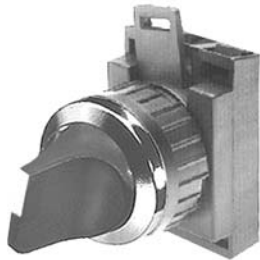
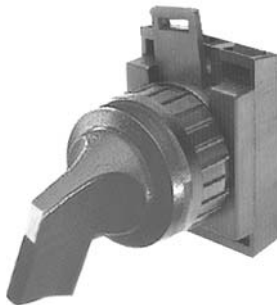


Non-illuminated Selector switches 2 position

Pilot Devices
Type CBK 22mm



CBK-M2BMK



CBK-2BMLR



CBK-CB10



KCB-02

Knob operator – 2 position

Type	Black plastic ring		Chrome metal ring	
	Catalog number	List price	Catalog number	List price
Maintained Black Red Grey	CBK-2BMK CBK-2BMKR CBK-2BMKE	\$ 13.00	CBK-M2BMK CBK-M2BMKR CBK-M2BMKE	\$ 13.00
Momentary Black Red Grey	CBK-2BSK CBK-2BSKR CBK-2BSKE	16.00	CBK-M2BSK CBK-M2BSKR CBK-M2BSKE	16.00
Maintained Black Red Grey	CBK-2AMK CBK-2AMKR CBK-2AMKE	13.00	CBK-M2AMK CBK-M2AMKR CBK-M2AMKE	13.00

Lever operator — 2 position

Type	Black plastic ring		Chrome metal ring	
	Catalog number	List price	Catalog number	List price
Maintained Black Red Grey	CBK-2BML CBK-2BMLR CBK-2BMLE	13.00	CBK-M2BML CBK-M2BMLR CBK-M2BMLE	\$ 13.00
Momentary Black Red Grey	CBK-2BSL CBK-2BSLR CBK-2BSLE	16.00	CBK-M2BSL CBK-M2BSLR CBK-M2BSLE	16.00
Maintained Black Red Grey	CBK-2AML CBK-2AMLR CBK-2AMLE	13.00	CBK-M2AML CBK-M2AMLR CBK-M2AMLE	13.00

Selector switch contacts 2 Position

As viewed from the front, the contacts are in the normal position with the switch handle in either the "A" or "B" position. In the "C" position, the contact(s) change state.

Contact blocks (Maximum 4 per operator)

Item	Separate contact blocks catalog number	Included with operator suffix code	List price adder
1 N.O. 1 N.C.	CBK-CB10 CBK-CB01	10 01	\$ 8.00
1 N.O. & 1N.C. 2 N.O. 2 N.C.	CBK-CB10 + CBK-CB01 CBK-CB10 + CBK-CB10 CBK-CB01 + CBK-CB01	11 20 02	16.00

Selector switches are complete except for contact blocks.

- To order a selector switch operator complete with contact block, add the appropriate suffix code to the end of the catalog number and add the list price adder to the operator list price. EX: CBK-2BMK, **\$ 21.00**
- To order just the contact block, refer to "Separate contact blocks" column and indicate catalog number and quantity. EX: CBK-CB10, qty 1, **\$ 8.00**

5 Contact block holders (Maximum 4 contact blocks)

To order an assembled unit with a 5 contact block holder, add the digit "5" to the end of the catalog number and add \$ 4.00 to the list price.

EX: CBK-2BMK5, **\$ 17.00**

To order double contact blocks used with the 5 block holder, order the following combinations separately:

Item	Catalog number	Price
2 NO 2 NC 1 NO & 1 NC	KCB-20 KCB-02 KCB-11	\$ 16.00

Example of individual component ordering

$$\text{CBK-2BMK} \quad + \quad \text{CBK-CB10} \quad = \quad \text{CBK-2BMK10}$$

$$\text{\$ 13.00} \quad + \quad \text{\$ 8.00} \quad = \quad \text{\$ 21.00}$$