




Components Lamp modules & transformers

Lamp modules & transformers — operator mounted

| Item | Voltage | Catalog number | List price |
|---|--|--|-----------------------|
|  CBK-LMF | Lamp module | | |
| | Full voltage type Resistor type 120V/60V 240V/120V 24V ^① 120V/24V ^② | CBK-LMF CBK-LMR1 CBK-LMR2 CBK-LMR24 CBK-LMLED | \$ 17.50 21.50 |
|  CBK-LMT1 | Lamp module transformer (pilot light) | | |
| | 120V/6V 240V/6V 380V/6V 480V/6V 120V/24V 240V/24V 380V/24V 480V/24V | CBK-LMT1 CBK-LMT2 CBK-LMT3 CBK-LMT4 CBK-LMT124 CBK-LMT224 CBK-LMT324 CBK-LMT424 | 35.00 |
|  CBK-LT1 | Illuminated pushbutton & selector switch transformer ^④ | | |
| | 120V/6V 240V/6V 380V/6V 480V/6V 120V/24V 240V/24V 380V/24V 480V/24V | CBK-LT1 CBK-LT2 CBK-LT3 CBK-LT4 CBK-LT124 CBK-LT224 CBK-LT324 CBK-LT424 | 35.00 |

Diode block


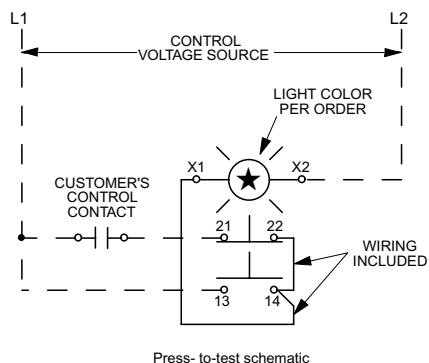

| Item | Voltage | Catalog number | List price |
|--|----------|----------------|------------|
|  CBK-CBD | 250V, 1A | CBK-CBD | \$ 14.00 |

Diagram for lamp test





- ① Designed for electronic circuits. The resistor limits the making current and prevents disturbances in the circuit. 24V filament bulb required.
- ② Designed for LED 24V bulbs.
- ③ Use with red, yellow and clear lenses only. See page 8.39.
- ④ Mounts onto CBK-LMF.

Lamp modules & transformers — base mounted

| Item | Voltage | Catalog number | List price |
|---|--|------------------------|------------|
|  CBK-LMFB | Full voltage type | CBK-LMFB | \$ 17.50 |
| | Resistor type 120V/60V 240V/120V | CBK-LMRB1 CBK-LMRB2 | 21.50 |

Lamp bulbs

| Item | Voltage | Catalog number | List price |
|---|---|---|--|
|  CBK-LB6 | Filament 6 VAC/DC 12 VAC/DC 24 VAC/DC 30 VAC/DC 48 VAC/DC 60 VAC/DC 130 VAC/DC Neon ^③ 220 VAC | CBK-LB6 CBK-LB12 CBK-LB24 CBK-LB30 CBK-LB48 CBK-LB60 CBK-LB1 | \$ 6 |
| | | CBK-LBN1 | CBK-LBN2 |
|  CBK-LBD1R | LED bulbs Standard Red 12 VDC 24 VAC/DC 48 VAC/VDC 60VAC/VDC 110-130 VAC/DC 120 VAC 230 VAC Green 12 VDC 24 VAC/DC 48 VAC/VDC 60VAC/VDC 110-130 VAC/DC 120 VAC 230 VAC Yellow 12 VDC 24 VAC/DC 48 VAC/VDC 60VAC/VDC 110-130 VAC/DC 120 VAC 230 VAC Blue 12 VDC 24 VAC/DC 48 VAC/VDC 60VAC/VDC 110-130 VAC/DC 120 VAC 230 VAC White 12 VDC 24 VAC/DC 48 VAC/VDC 60VAC/VDC 110-130 VAC/DC 120 VAC 230 VAC Flashing Red 24 VDC Green 24 VDC Yellow 24 VDC | CBK-LBD12R CBK-LBD8R CBK-LBD48R CBK-LBD60R CBK-LBD13R CBK-LBD1R CBK-LBD2R CBK-LBD12G CBK-LBD8G CBK-LBD48G CBK-LBD60G CBK-LBD13G CBK-LBD1G CBK-LBD2G CBK-LBD12Y CBK-LBD8Y CBK-LBD48Y CBK-LBD60Y CBK-LBD13Y CBK-LBD1Y CBK-LBD2Y CBK-LBD12L CBK-LBD8L CBK-LBD48L CBK-LBD60L CBK-LBD13L CBK-LBD1L CBK-LBD2L CBK-LBD12W CBK-LBD8W CBK-LBD48W CBK-LBD60W CBK-LBD13W CBK-LBD1W CBK-LBD2W | 27 15 21 21 21 15 21 27 15 21 21 21 15 21 27 15 21 21 21 15 21 32 18 21 21 28 18 24 32 18 21 21 28 18 24 20 |