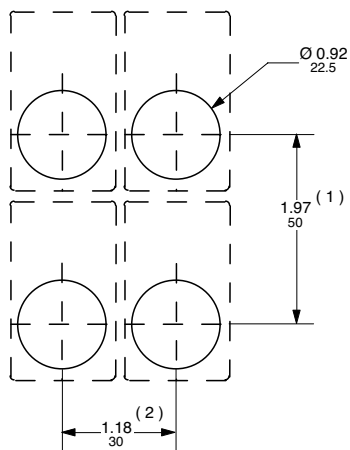


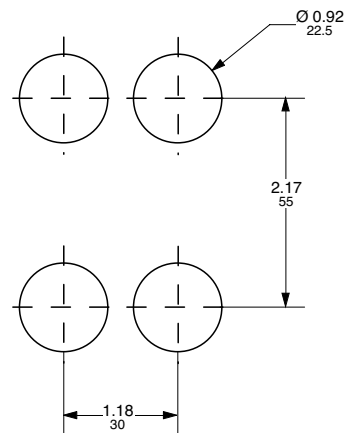
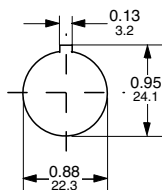
Approximate dimensions

← 00.00 Inches
00.00 [Millimeters]

Nameplate drilling plans



Pushbuttons, switches & pilot lights



Double pushbuttons

(1) 2.16 /55mm when legend plate H= 1.75 / 44.4mm is used,
2.40 /61mm for mushroom pushbutton with D = 60mm.

(2) 1.46 /37mm when legend plate with insert is used,
1.97 /50mm when 5-block holder is used.
Min. dimension = the diameter of mushroom
button