

General information

Wire duct, cable ties, spiral wrap

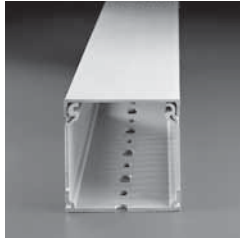
The cover can't slide in vertical sections, nor is the bottom rib affected by the weight of the cables in horizontal sections.

The exceptional care with which ABB wiring ducts are manufactured also ensures a clean internal finish. Because there aren't any plastic burrs you can work hour after hour without your hands suffering the consequences.

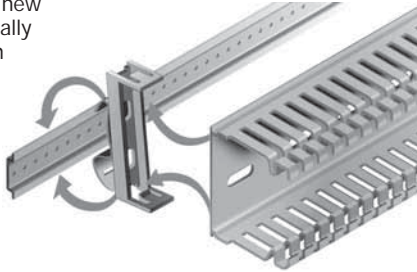
The dimensions and resilience of the ribs on ABB cable management systems ensure they can be moved apart many times during the wiring phase. But when you need to remove the rib to create openings for letting cables in or out, the special knockouts allow you to make an instant clean break. The base of the wall also features knockouts that make it possible to cut the edge when you want to make level branch connections.

The 80 and 100 mm high versions feature cable holder moldings in the middle of the straight sections of the ribs.

The new ABB cable management systems are in a class of their own when it comes to ease of installation. In fact they have been made for snap-on installation to a new accessory that's been specially designed for fast fitting both to DIN rails and base plates. The new bottom profile of the wiring ducts has been changed and no longer needs drilling or rivets. Thanks to this new accessory, mounting and removal both take no more than a click.



All the space cables need with the new wiring ducts available in the 100 mm height and six different base sizes.



How do you connect the switchgears installed on switchboard doors? Our new flexible cable management systems can be bent or twisted without breaking and allow you to solve all manner of connection problems where hinged moving parts are concerned. They are quick and easy to use: the offset position of the ribs and the way they are angled slightly downwards makes it easier to insert and extract the cables.

These new ducts save time and energy compared to traditional coiled designs. When you need to add new cables, change and inspect them or carry out maintenance, the operations required are simple and take next to no time at all. Simply pull out the cables or feed in new ones without having to unwind or rewind the coils. The flexible wiring ducts are supplied as standard with ready-fitted double-sided adhesive tape offering high adhesion on steel. And you can, of course, naturally fit them using screws and rivets as well. They engage in special slots on the bottom that are orientated in two axes to enable the position of the ducts to be adjusted.

In those cases in which it's advantageous to protect cables from dust (IP 40) while retaining maximum installation flexibility, we designed these new cable management systems with circular knockouts in the sides for branch connections with rigid or corrugated conduits (with or without tube clamps) or directly with cables. The neck of the hole also forms part of the knockout, making it easier to install the cables and branch connections in any work phase and conditions.

