

Disconnect
switches
Non-fusible

General information

Selection guide

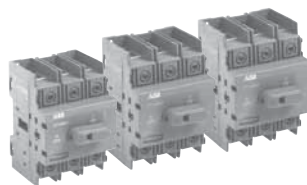
OT16E3 – OT160E3



OT16E3 OT25E3 OT32E3



OT45E3 OT63E3



OT30E3 OT60E3 OT100E3



OT160E3

| Catalog number | 3 pole | OT16E3 | OT25E3 | OT32E3 | OT45E3 | OT63E3 | OT30E3 | OT60E3 | OT100E3 | OT160E3 |
|---|-------------|-----------|-----------|-----------|-----------|-----------|-----------|-----------|------------|------------|
| General purpose amp rating | A | 16 | 25 | 40 | 60 | 80 | 30 | 60 | 100 | 125 |
| Catalog reference | Page # | 18.10 | 18.10 | 18.10 | 18.10 | 18.10 | 18.10 | 18.10 | 18.10 | 18.20 |
| Approvals ① | | | | | | | | | | |
| | 2 pole | N/A | N/A | N/A | N/A | N/A | N/A | N/A | N/A | UL98 |
| | 3 pole | UL508 | UL508 | UL508 | UL508 | UL508 | UL98 | UL98 | UL98 | UL98 |
| | 4 pole | UL508 | UL508 | UL508 | UL508 | UL508 | UL98 | UL98 | UL98 | UL98 |
| Technical ratings – UL, CSA ② | | | | | | | | | | |
| Max operating voltage | V | 600 | 600 | 600 | 600 | 600 | 600 | 600 | 600 | 600 |
| Max horsepower rating | | | | | | | | | | |
| Three phase | | | | | | | | | | |
| 200 – 208V | HP | 3 | 7.5 | 10 | 15 | 20 | 10 | 20 | 25 | 30 |
| 240V | HP | 5 | 7.5 | 10 | 15 | 20 | 10 | 20 | 30 | 40 |
| 480V | HP | 10 | 15 | 20 | 30 | 40 | 20 | 40 | 50 | 75 |
| 600V | HP | 10 | 20 | 25 | 30 | 40 | 30 | 40 | 50 | 100 |
| Single phase | | | | | | | | | | |
| 120V | HP | 1 | 1.5 | 2 | 2 | 2 | 2 | 3 | 5 | 7.5 |
| 240V | HP | 2 | 3 | 5 | 5 | 5 | 5 | 7.5 | 15 | 20 |
| Technical ratings – IEC ③ | | | | | | | | | | |
| Rated insulation and operational voltage, AC20 and DC20 | V | 750 | 750 | 750 | 750 | 750 | 750 | 750 | 750 | 750 |
| Rated thermal current, I _{th} | | | | | | | | | | |
| AC 20/DC 20 open | A | 25 | 32 | 40 | 63 | 80 | 40 | 63 | 115 | 200 |
| AC 20/DC 20 enclosed | A | 25 | 32 | 40 | 63 | 80 | 40 | 63 | 115 | 160 |
| AC 21A ≤500V | A | 16 | 25 | 32 | 63 | 80 | 40 | 63 | 100 | 160 |
| AC 21A ≤690V | A | 16 | 25 | 32 | 63 | 80 | 40 | 63 | 100 | 160 |
| Rated operational power AC23 | | | | | | | | | | |
| 400/415V | kW | 7.5 | 9 | 11 | 22 | 37 | 15 | 18.5 | 37 | 75 |
| 690V | kW | 7.5 | 9 | 11 | 15 | 18.5 | 15 | 15 | 37 | 75 |
| Physical characteristics | | | | | | | | | | |
| Weight ③ | 3 pole lb | 0.24 | 0.24 | 0.24 | 0.59 | 0.59 | 0.79 | 0.79 | 0.79 | 2.42 |
| Dimension | 3 pole H in | 2.68 | 2.68 | 2.68 | 3.60 | 3.60 | 3.94 | 3.94 | 3.94 | 5.00 |
| | W in | 1.38 | 1.38 | 1.38 | 2.07 | 2.07 | 2.76 | 2.76 | 2.76 | 4.96 |
| | D in | 2.20 | 2.20 | 2.20 | 2.85 | 2.85 | 2.95 | 2.95 | 2.95 | 2.93 |
| Accessories | | | | | | | | | | |
| Terminal lug kit | | Integral | Integral | Integral | Integral | Integral | Integral | Integral | Integral | Integral |
| Terminal shroud | | • | • | • | • | • | • | • | • | — |
| Auxiliary contact | | • | • | • | • | • | • | • | • | • |
| Handle UL/NEMA type | | | | | | | | | | |
| Type 1, 3R, 12 | | • | • | • | • | • | • | • | • | • |
| Type 1, 3R, 4, 4X, 12 | | • | • | • | • | • | • | • | • | • |
| Handle type | | | | | | | | | | |
| Selector | | • | • | • | • | • | • | • | • | — |
| Pistol | | • | • | • | • | • | • | • | • | • |
| Conversion kits | | | | | | | | | | |
| 6 pole | | • | • | • | • | • | • | • | • | • |
| Transfer | | • | • | • | • | • | • | • | • | • |
| Bypass | | • | • | • | • | • | • | • | • | • |
| Mechanical interlock | | • | • | • | • | • | • | • | • | • |
| Electrical interlock | | — | — | — | — | — | — | — | — | — |

• = Available
— = Not available

UL listed, CSA approved, IEC rated, CE marked

① UL listed switches are also CSA approved.
② For complete technical information please see page 18.43 – 18.74.
③ Switch only.