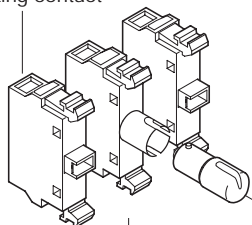


General information Mounting

Exploded view

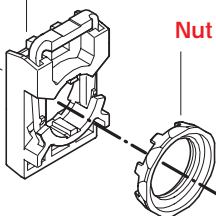
Contact block

Single pole with making or breaking contact



Holder

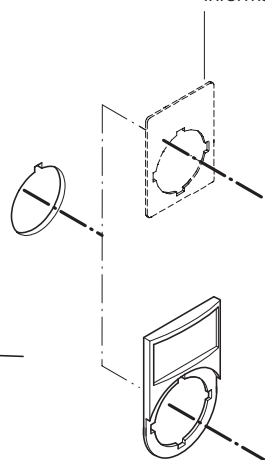
Available either for three or five blocks in one single row. Additional blocks can be stacked on holders for three blocks.



Nut

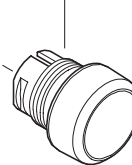
Legend plates

Of aluminum with slots that guide the legend plate and the operator into the correct position. Please, see the chapter 'legend plates' for more information.



Operator

Buttons, lenses and handles in several colors. Illuminated or non-illuminated.



Legend plate holder

Of black plastic. Insert of brushed aluminum. Please, see the chapter 'legend plates' for more information.

Bezels

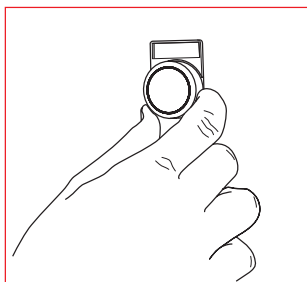
Pushbuttons, selector switches and toggle switches with bezel in black plastic, chrome metal are available.

Lamp block

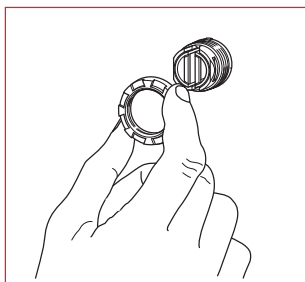
Illuminated pushbuttons, illuminated selector switches and pilot lights have a lamp block in the center position of the holder.

8

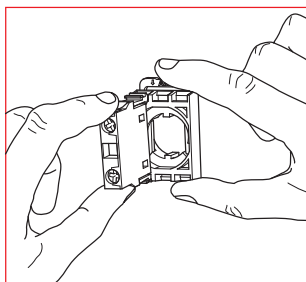
Easy to mount



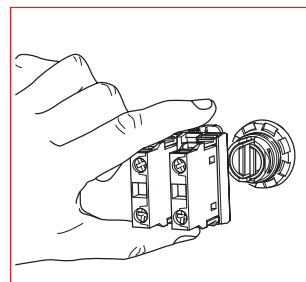
The operator is to be inserted from the front.....



...and secured at the back with a nut.

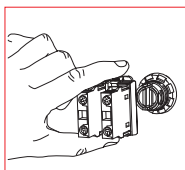
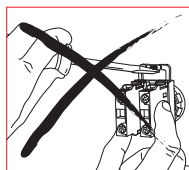


The contact blocks/lamp block are then snapped on to the holder...



...and the holder snaps on to the operator.

...and to remove



Press down the spring on the holder and pull the holder from the actuator.